

Gordon Brent BROCHU-INGRAM, KEXMIN field station \* March 19, 2021  
discussion for CRP3852 / CRP5852 / ARCH6408 Queer Space / Queering Space  
Department of City and Regional Planning,  
College of Architecture, Art, and Planning, Cornell University

# Reimagining Queer Infrastructure

Planning for ecologies of care  
(in a decolonizing world during  
multiple emergencies)



Gordon Brent BROCHU-INGRAM, KEXMIN field station \* March 19, 2021  
Queer Space/Queering Space, College of Architecture, Art, and Planning, Cornell University  
Reimagining Queer Infrastructure:  
Planning for ecologies of care (in a decolonizing world during multiple emergencies)

Thanks to Jeff Chusid and Chris Hinman,  
of Cornell University's College of  
Architecture, Art, and Planning, for kindly  
inviting and supporting this discussion!  
Also thanks to Montréal-based, queer  
community mapper Lucas LaRochelle for  
this month's inspiring, three-part zoom  
workshop on queer mapping, mutual aid,  
data opacity, and interactive websites.



Gordon Brent BROCHU-INGRAM, KEXMIN field station \* March 19, 2021

Queer Space/Queering Space, College of Architecture, Art, and Planning, Cornell University

**Reimagining Queer Infrastructure:**

Planning for ecologies of care (in a decolonizing world during multiple emergencies)

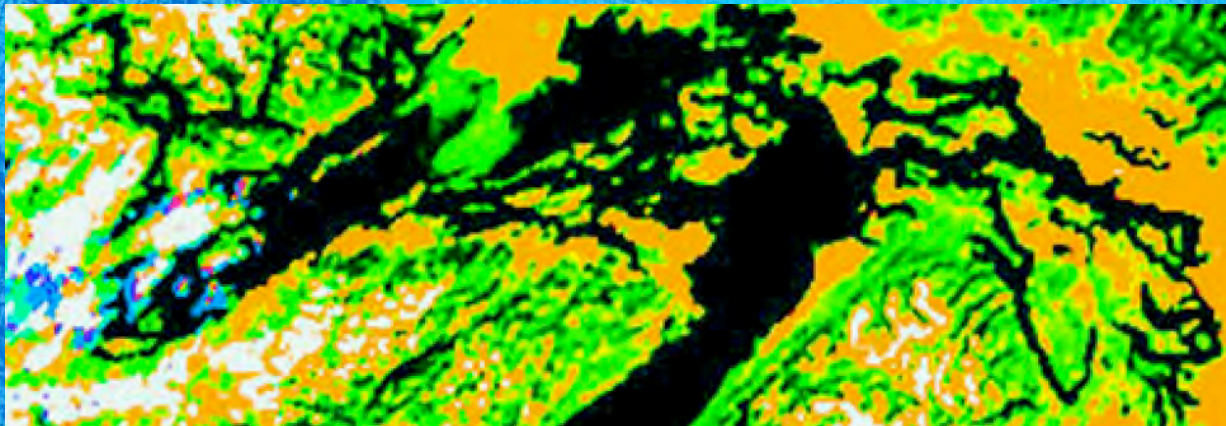
# acknowledgements



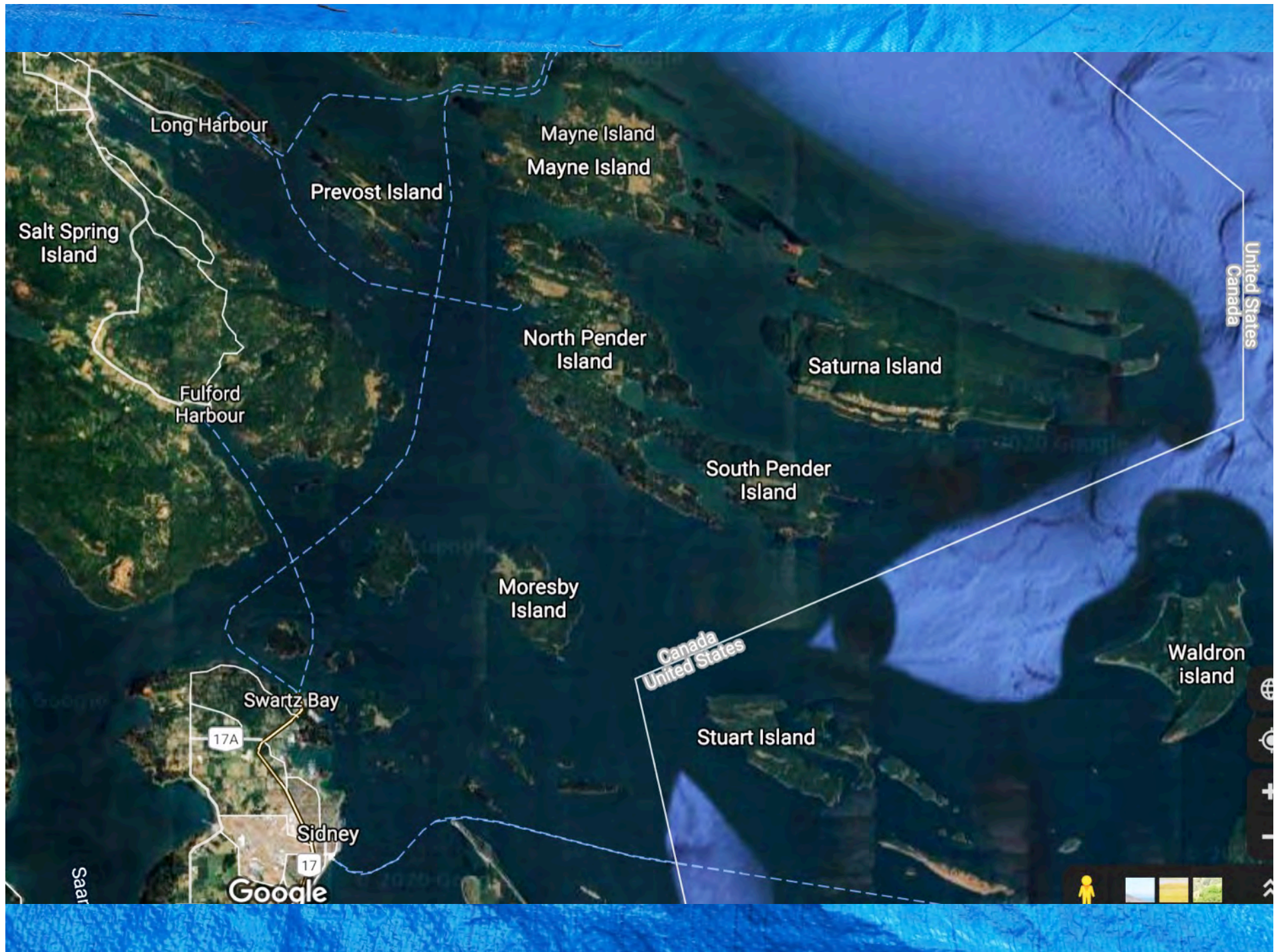
Canada Council  
for the Arts

Conseil des arts  
du Canada

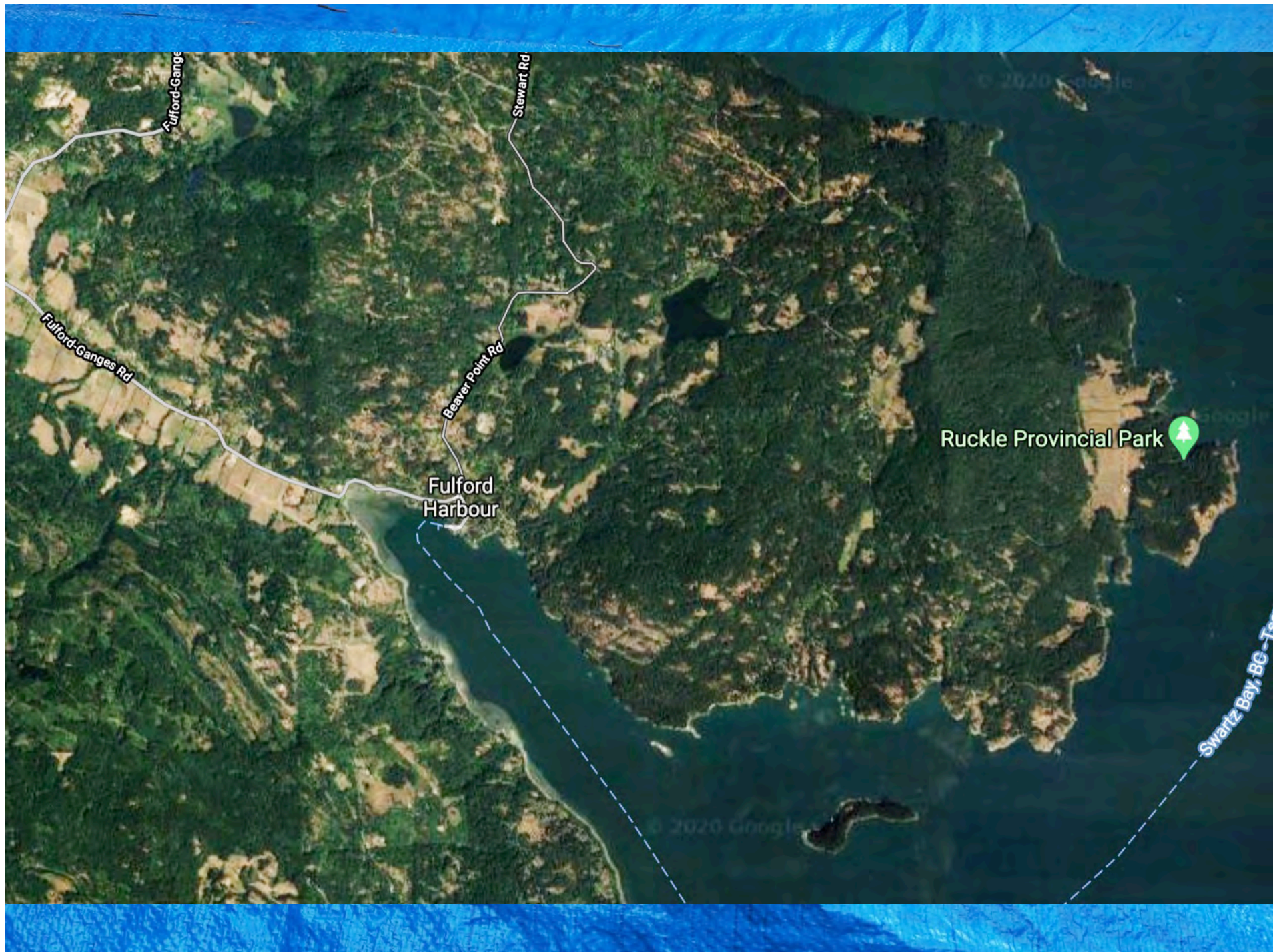
# territorial acknowledgement



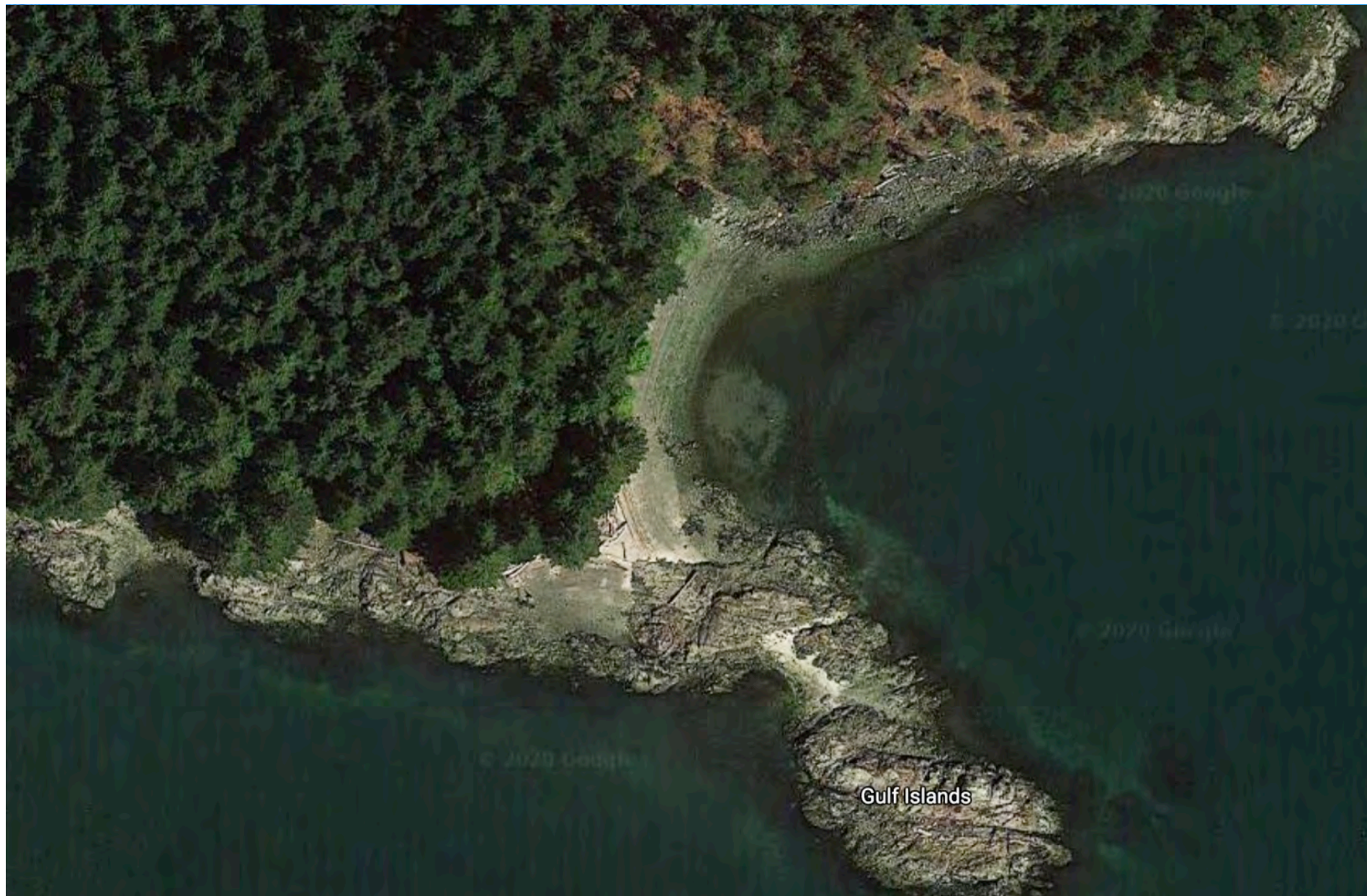






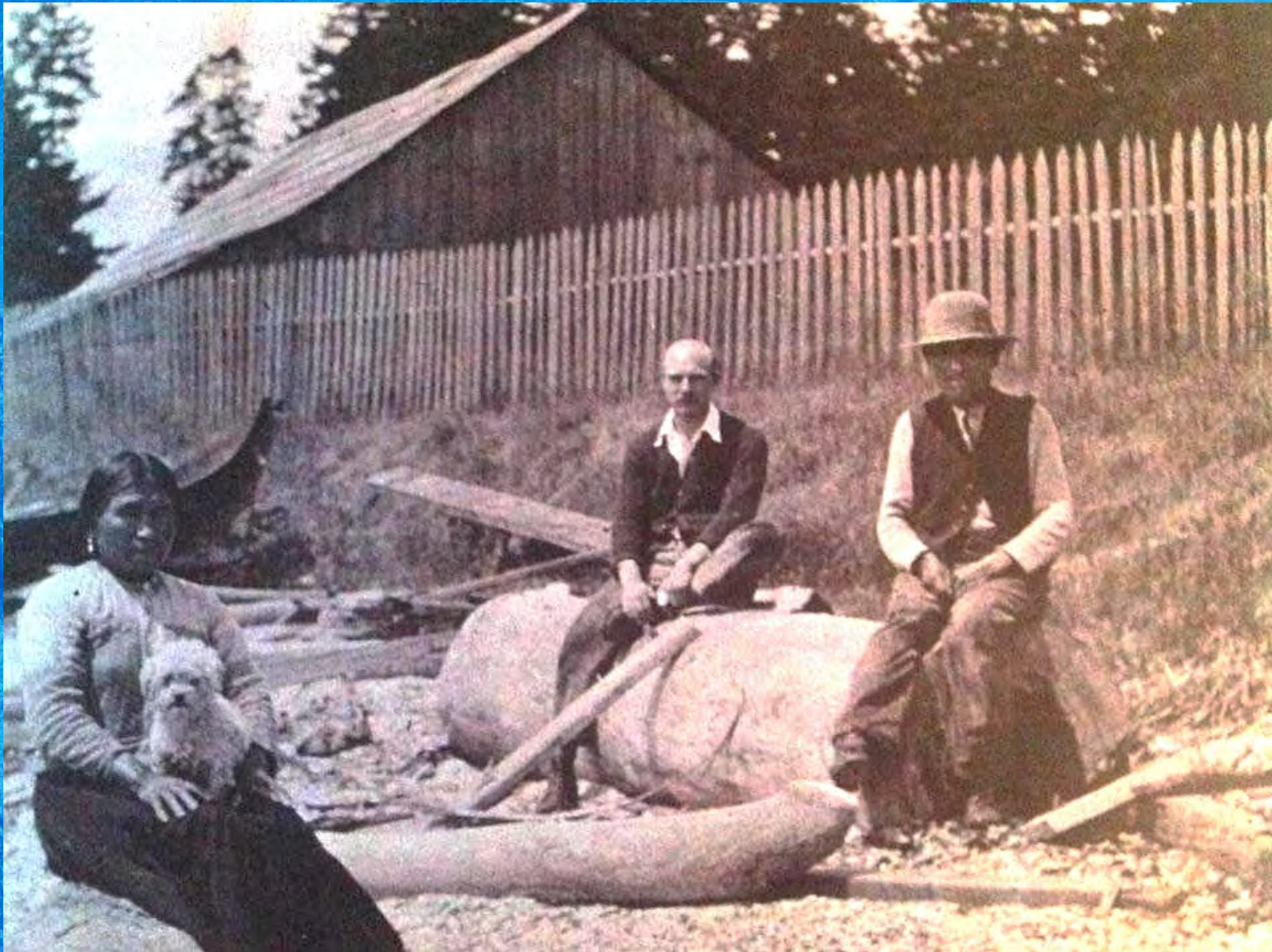






WEN,NÁ,NEĆ 2020





WEN,NÁ,NEĆ 1920 Mary Zalt, Zalt Zalt and visitor  
with Salish wool dog (extinct ca1940)



Gordon Brent BROCHU-INGRAM, KEXMIN field station \* March 19, 2021  
Queer Space/Queering Space, College of Architecture, Art, and Planning, Cornell University  
**Reimagining Queer Infrastructure:**  
Planning for ecologies of care (in a decolonizing world during multiple emergencies)

1

# **Introduction: Chaotic times for LGBTQ spaces & new needs for community planning**



Gordon Brent BROCHU-INGRAM, KEXMIN field station \* March 19, 2021  
Queer Space/Queering Space, College of Architecture, Art, and Planning, Cornell University  
Reimagining Queer Infrastructure:  
Planning for ecologies of care (in a decolonizing world during multiple emergencies)

The central question in this discussion is

**How can we query contemporary culture to more fully identify needs, pressures, and opportunities for new queer infrastructure especially for the more vulnerable LGBTQ2S populations?**



Gordon Brent BROCHU-INGRAM, KEXMIN field station \* March 19, 2021  
Queer Space/Queering Space, College of Architecture, Art, and Planning, Cornell University  
Reimagining Queer Infrastructure:  
Planning for ecologies of care (in a decolonizing world during multiple emergencies)

*don't worry,  
i'm not going to kill you  
or anything.*



Billy-Ray Belcourt



Gordon Brent BROCHU-INGRAM, KEXMIN field station \* March 19, 2021  
Queer Space/Queering Space, College of Architecture, Art, and Planning, Cornell University  
Reimagining Queer Infrastructure:  
Planning for ecologies of care (in a decolonizing world during multiple emergencies)



Leanne Betasamosake Simpson



Gordon Brent BROCHU-INGRAM, KEXMIN field station \* March 19, 2021  
Queer Space/Queering Space, College of Architecture, Art, and Planning, Cornell University  
Reimagining Queer Infrastructure:  
Planning for ecologies of care (in a decolonizing world during multiple emergencies)



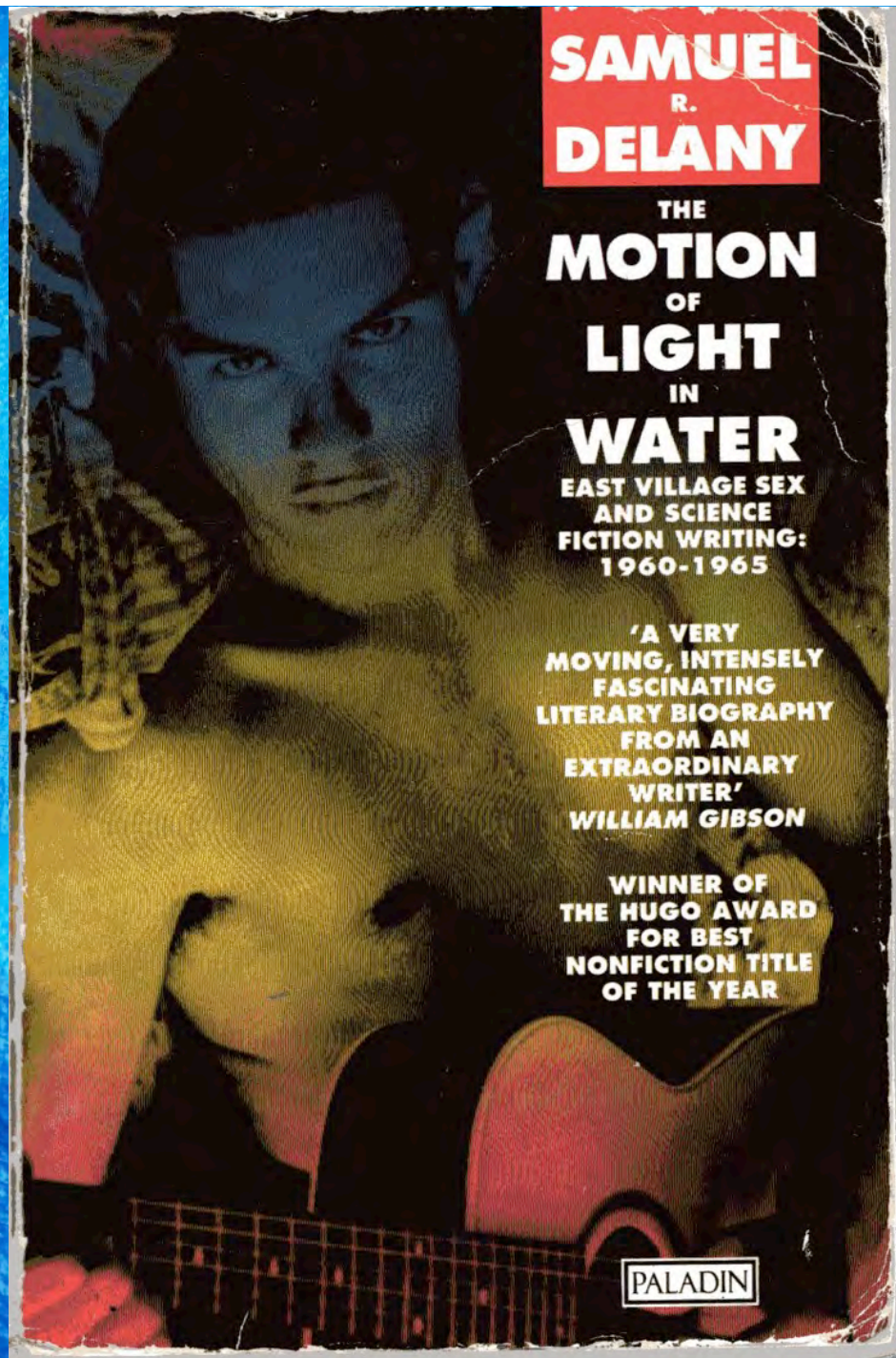
Mattilda Bernstein Sycamore



Gordon Brent BROCHU-INGRAM,  
KEXMIN field station \*  
March 19, 2021

Queer Space/Queering Space,  
College of Architecture,  
Art, and Planning,  
Cornell University

Reimagining Queer Infrastructure:  
Planning for ecologies of care  
(in a decolonizing world  
during multiple emergencies)





Gordon Brent BROCHU-INGRAM, KEXMIN field station \* March 19, 2021  
Queer Space/Queering Space, College of Architecture, Art, and Planning, Cornell University  
**Reimagining Queer Infrastructure:**  
Planning for ecologies of care (in a decolonizing world during multiple emergencies)

2

**Problem statement:  
Reimagining care as  
infrastructure as  
planning goals**



Gordon Brent BROCHU-INGRAM, KEXMIN field station \* March 19, 2021  
Queer Space/Queering Space, College of Architecture, Art, and Planning, Cornell University  
Reimagining Queer Infrastructure:  
Planning for ecologies of care (in a decolonizing world during multiple emergencies)



Tom of Finland picture book



Gordon Brent BROCHU-INGRAM, KEXMIN field station \* March 19, 2021

Queer Space/Queering Space, College of Architecture, Art, and Planning, Cornell University

Reimagining Queer Infrastructure:

Planning for ecologies of care (in a decolonizing world during multiple emergencies)

Queer infrastructure exists to facilitate  
the **care** necessary to maintain the following  
interactions and related self-sufficiency:

"community" ;

demographics especially health;

networks;

conviviality;

needs;



Gordon Brent BROCHU-INGRAM, KEXMIN field station \* March 19, 2021

Queer Space/Queering Space, College of Architecture, Art, and Planning, Cornell University

Reimagining Queer Infrastructure:

Planning for ecologies of care (in a decolonizing world during multiple emergencies)

erotic expression;

cultural expression;

mutual aid;

support systems;

events such as demonstrations, festivals,

and dance parties;

entertainment and cultural spaces;

repair;

businesses; and

political economies.



Gordon Brent BROCHU-INGRAM, KEXMIN field station \* March 19, 2021  
Queer Space/Queering Space, College of Architecture, Art, and Planning, Cornell University  
**Reimagining Queer Infrastructure:**  
Planning for ecologies of care (in a decolonizing world during multiple emergencies)

3

**Protecting, expanding &  
diversifying  
queer infrastructure**



Gordon Brent BROCHU-INGRAM, KEXMIN field station \* March 19, 2021

Queer Space/Queering Space, College of Architecture, Art, and Planning, Cornell University

Reimagining Queer Infrastructure:

Planning for ecologies of care (in a decolonizing world during multiple emergencies)

One of the most difficult aspects of beginning to conceive of planning for queer infrastructure is encompassing the diversity of functions, combinations of functions, durations, dependent / client populations, and scales present today and scales that are necessary for the future.



Gordon Brent BROCHU-INGRAM, KEXMIN field station \* March 19, 2021  
Queer Space/Queering Space, College of Architecture, Art, and Planning, Cornell University  
Reimagining Queer Infrastructure:  
Planning for ecologies of care (in a decolonizing world during multiple emergencies)



The LGBTQ Center of Southern Nevada, Las Vegas



Gordon Brent BROCHU-INGRAM, KEXMIN field station \* March 19, 2021  
Queer Space/Queering Space, College of Architecture, Art, and Planning, Cornell University  
Reimagining Queer Infrastructure:  
Planning for ecologies of care (in a decolonizing world during multiple emergencies)





Gordon Brent BROCHU-INGRAM, KEXMIN field station \* March 19, 2021  
Queer Space/Queering Space, College of Architecture, Art, and Planning, Cornell University  
Reimagining Queer Infrastructure:  
Planning for ecologies of care (in a decolonizing world during multiple emergencies)



the blue polyethylene tarp ubiquitous in indigenous communities in  
the northern half of North America







Gordon Brent BROCHU-INGRAM, KEXMIN field station \* March 19, 2021  
Queer Space/Queering Space, College of Architecture, Art, and Planning, Cornell University  
Reimagining Queer Infrastructure:  
Planning for ecologies of care (in a decolonizing world during multiple emergencies)





Gordon Brent BROCHU-INGRAM, KEXMIN field station \* March 19, 2021  
Queer Space/Queering Space, College of Architecture, Art, and Planning, Cornell University  
Reimagining Queer Infrastructure:  
Planning for ecologies of care (in a decolonizing world during multiple emergencies)





Gordon Brent BROCHU-INGRAM, KEXMIN field station \* March 19, 2021  
Queer Space/Queering Space, College of Architecture, Art, and Planning, Cornell University  
Reimagining Queer Infrastructure:  
Planning for ecologies of care (in a decolonizing world during multiple emergencies)











**ULARA NAKAGAWA/CNNGO**











# ▼ GAY'S THE WORD ▼







A GAY MAN  
WAS BRUTALLY MURDERED  
HERE LAST NIGHT  
IN A BIAS ATTACK.  
STOP THE HATE!



to feel  
your space



# LAVENDER HILL A LOVE STORY

THE LIFE AND TIMES  
OF A GAY & LESBIAN COMMUNE





Gordon Brent BROCHU-INGRAM, KEXMIN field station \* March 19, 2021  
Queer Space/Queering Space, College of Architecture, Art, and Planning, Cornell University  
Reimagining Queer Infrastructure:  
Planning for ecologies of care (in a decolonizing world during multiple emergencies)





Gordon Brent BROCHU-INGRAM, KEXMIN field station \* March 19, 2021  
Queer Space/Queering Space, College of Architecture, Art, and Planning, Cornell University  
Reimagining Queer Infrastructure:  
Planning for ecologies of care (in a decolonizing world during multiple emergencies)

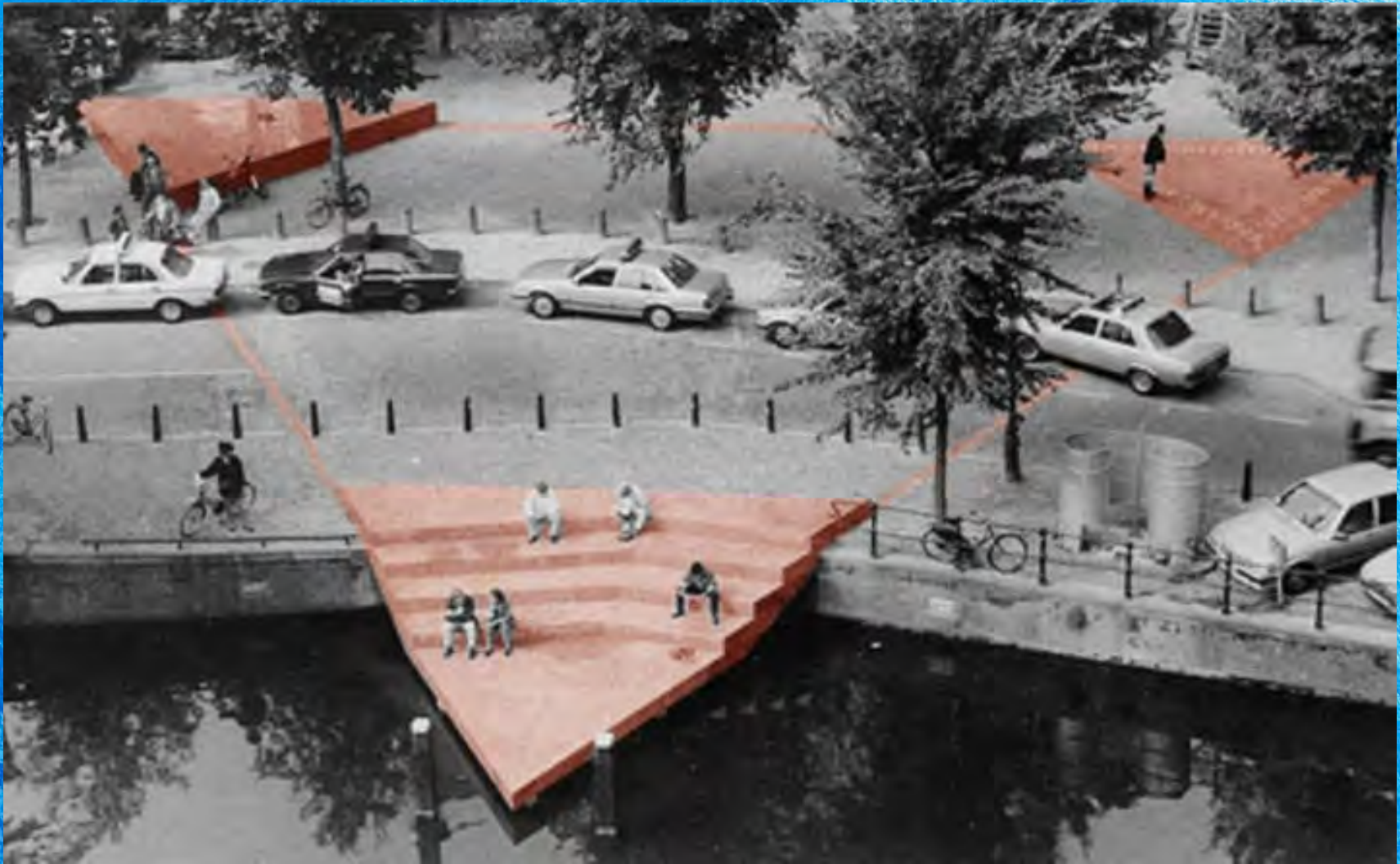








Gordon Brent BROCHU-INGRAM, KEXMIN field station \* March 19, 2021  
Queer Space/Queering Space, College of Architecture, Art, and Planning, Cornell University  
Reimagining Queer Infrastructure:  
Planning for ecologies of care (in a decolonizing world during multiple emergencies)





Gordon Brent BROCHU-INGRAM, KEXMIN field station \* March 19, 2021  
Queer Space/Queering Space, College of Architecture, Art, and Planning, Cornell University  
Reimagining Queer Infrastructure:  
Planning for ecologies of care (in a decolonizing world during multiple emergencies)

## The Queer Dance Party That Became a Slaysian Celebration

Brooklyn banger Bubble T was founded in response to the exclusionary vibe of other gay spaces.



BY MITCHELL KUGA  
February 20, 2018



Hao Nguyen



Gordon Brent BROCHU-INGRAM, KEXMIN field station \* March 19, 2021  
Queer Space/Queering Space, College of Architecture, Art, and Planning, Cornell University  
Reimagining Queer Infrastructure:  
Planning for ecologies of care (in a decolonizing world during multiple emergencies)

## Bathhouses outlasted the AIDS epidemic, but will they survive COVID-19?

These crucial sites for sex, community, education and protest are at risk of disappearing forever



By **Paul Gallant**

Oct 19, 2020, 11:51 AM EDT





Gordon Brent BROCHU-INGRAM, KEXMIN field station \* March 19, 2021  
Queer Space/Queering Space, College of Architecture, Art, and Planning, Cornell University  
Reimagining Queer Infrastructure:  
Planning for ecologies of care (in a decolonizing world during multiple emergencies)





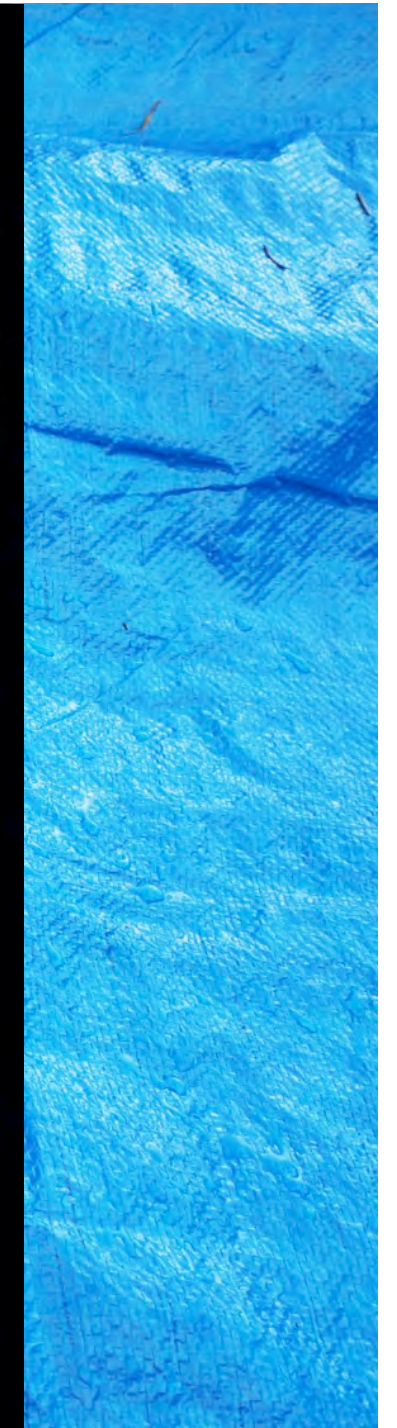






© Daniel Nicoletta







Gordon Brent BROCHU-INGRAM, KEXMIN field station \* March 19, 2021  
Queer Space/Queering Space, College of Architecture, Art, and Planning, Cornell University  
Reimagining Queer Infrastructure:  
Planning for ecologies of care (in a decolonizing world during multiple emergencies)









Gordon Brent BROCHU-INGRAM, KEXMIN field station \* March 19, 2021  
Queer Space/Queering Space, College of Architecture, Art, and Planning, Cornell University  
Reimagining Queer Infrastructure:  
Planning for ecologies of care (in a decolonizing world during multiple emergencies)









1967  
PRIDE  
(Personal  
Rights in  
Defense and  
Education)  
led hundreds  
in protest  
of a police  
raid on the  
Black Cat  
bar in  
Los Angeles





LOS ANGELES POLICE DEPARTMENT

EDWARD M. DAVIS  
Chief of Police



TOM BRADLEY  
Mayor

Mailing Address: Box 30158  
Los Angeles, Calif. 90030

Ref. No. 1.1

May 23, 1975

Ms. Sharon D. Cornelison, President  
Christopher Street West Association  
P.O. Box 3949  
Hollywood, California 90028

Dear Ms. Cornelison:

As you no doubt expected, I am declining your invitation to participate in the celebration of "GAY PRIDE WEEK." While I support your organization's constitutional right to express your feelings on the subject of homosexuality, I am obviously not in sympathy with your views on the subject. I would much rather celebrate "GAY CONVERSION WEEK" which I will gladly sponsor when the medical practitioners in this country find a way to convert gays to heterosexuals.

Very truly yours,

E. M. DAVIS  
Chief of Police



Number 11 March 1981 / \$2.00 / 128 pp.

TOURISTS IN HOMELAND: A LOOK AT THE CBC'S "SHARING THE SECRET."

# Body Politic

A MAGAZINE FOR GAY LIBERATION

## Getting together to support ourselves

Toronto's Gay Community Centre opens its doors to provide a place for gay men to meet and support each other.

## Let's get nude!

Two new nude art galleries in Toronto provide an outlet for gay artists and a place for gay men to see art.

## Jump Mike's web

The web is a place where gay men can find out about the latest in gay news and events.

## And

- The New York gay community
- The gay community in the US
- The gay community in the UK

FEB 8, TORONTO:  
150 COPS  
SMASH UP  
THE BATHS  
— 286  
GAY MEN  
BUSTED

# RAGE!









## San Francisco

*Liners dock here*

*Please note that only streets with places of special interest are marked*

\* \* Denotes entertainment/dancing

\*Denotes restaurant

**NORTH BEACH & NORTH OF MARKET STREET AREA**





Gordon Brent BROCHU-INGRAM, KEXMIN field station \* March 19, 2021  
Queer Space/Queering Space, College of Architecture, Art, and Planning, Cornell University  
Reimagining Queer Infrastructure:  
Planning for ecologies of care (in a decolonizing world during multiple emergencies)











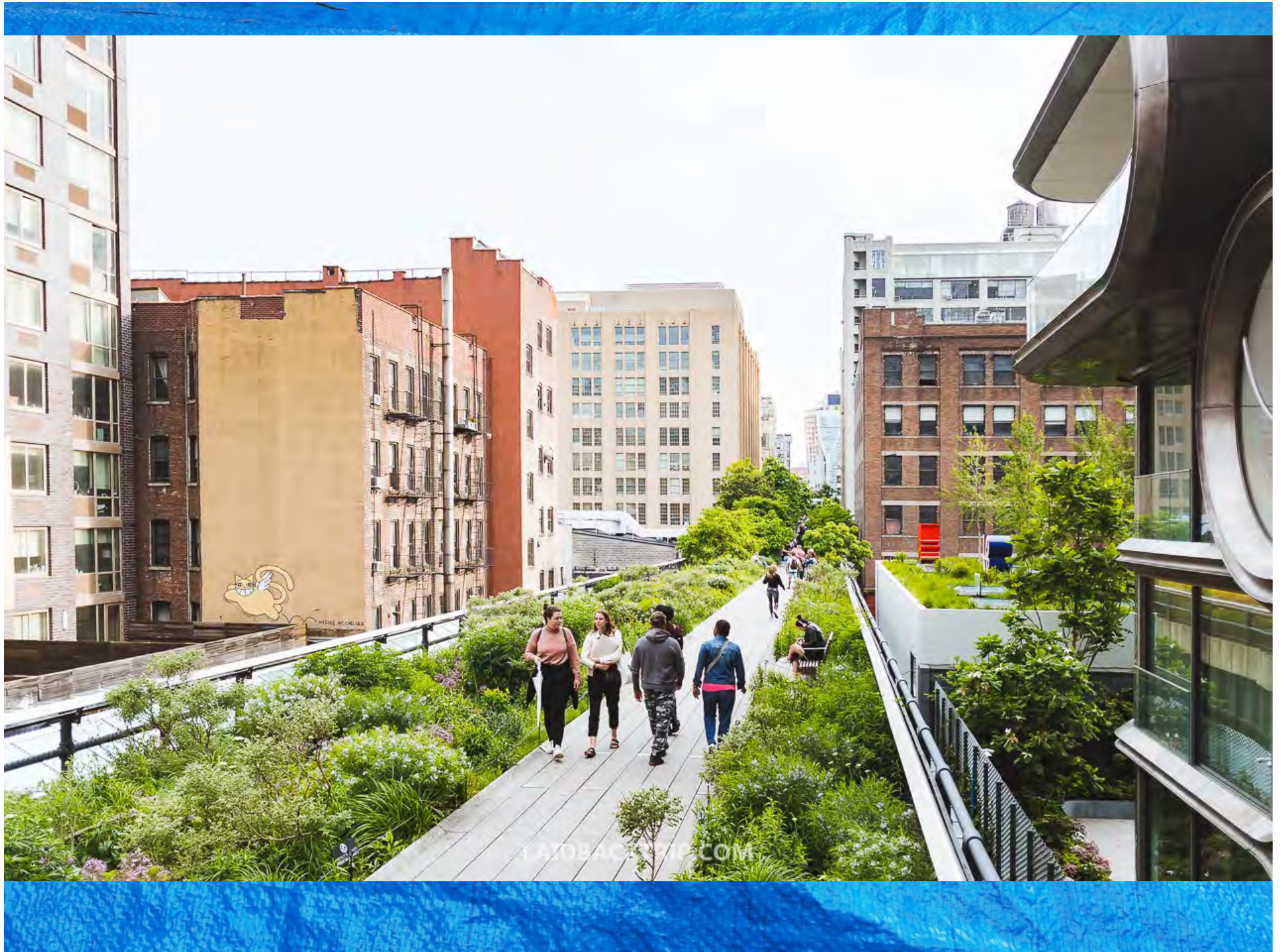
## Gays in the park: Why a rainbow flag has become one of the primary symbols of Occupy Gezi

*posted by [Oray Egin](#) on [June 14, 2013](#) in [Sneak Peek](#)*







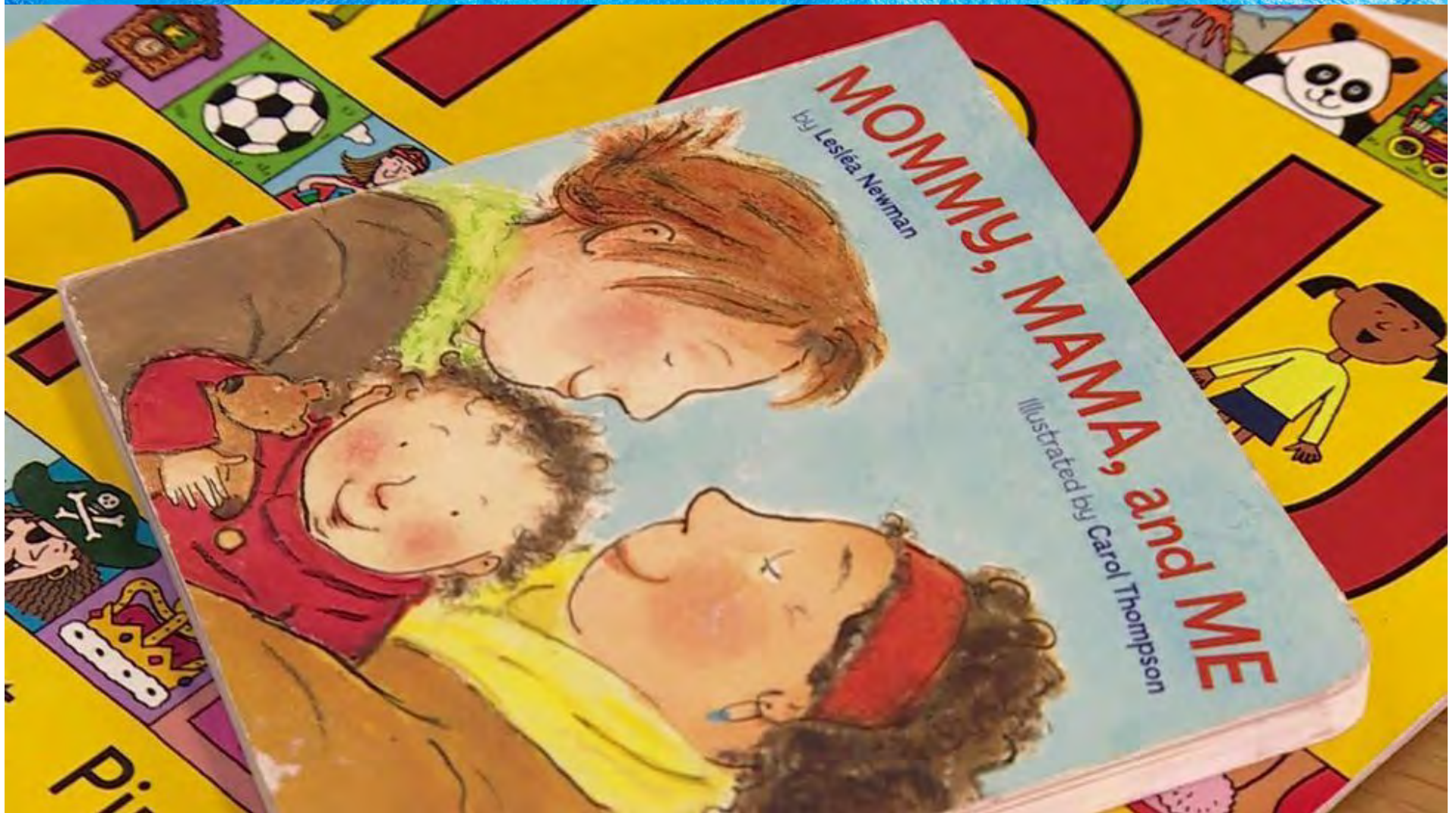








Gordon Brent BROCHU-INGRAM, KEXMIN field station \* March 19, 2021  
Queer Space/Queering Space, College of Architecture, Art, and Planning, Cornell University  
Reimagining Queer Infrastructure:  
Planning for ecologies of care (in a decolonizing world during multiple emergencies)





Gordon Brent BROCHU-INGRAM, KEXMIN field station \* March 19, 2021  
Queer Space/Queering Space, College of Architecture, Art, and Planning, Cornell University  
Reimagining Queer Infrastructure:  
Planning for ecologies of care (in a decolonizing world during multiple emergencies)





Gordon Brent BROCHU-INGRAM, KEXMIN field station \* March 19, 2021  
Queer Space/Queering Space, College of Architecture, Art, and Planning, Cornell University  
Reimagining Queer Infrastructure:  
Planning for ecologies of care (in a decolonizing world during multiple emergencies)



The 104-unit Triangle Square in Los Angeles offers yoga, acupuncture, and access to nearby theaters *Photograph by Elizabeth Weinberg for Bloomberg Businessweek*



Gordon Brent BROCHU-INGRAM, KEXMIN field station \* March 19, 2021  
Queer Space/Queering Space, College of Architecture, Art, and Planning, Cornell University  
Reimagining Queer Infrastructure:  
Planning for ecologies of care (in a decolonizing world during multiple emergencies)





Gordon Brent BROCHU-INGRAM, KEXMIN field station \* March 19, 2021  
Queer Space/Queering Space, College of Architecture, Art, and Planning, Cornell University  
**Reimagining Queer Infrastructure:**  
Planning for ecologies of care (in a decolonizing world during multiple emergencies)

**4**

**Infrastructure for  
LGBTQ2S populations as  
part of ecological life  
support  
(in a climate emergency)**




Gordon Brent BROCHU-INGRAM, KEXMIN field station \* March 19, 2021  
Queer Space/Queering Space, College of Architecture, Art, and Planning, Cornell University  
Reimagining Queer Infrastructure:  
Planning for ecologies of care (in a decolonizing world during multiple emergencies)

After COVID and as gentrification intensifies, the ‘name of the game’ for the majority of LGBTQ2S populations will be survival, housing, economic and professional development, and migration away from environmental emergencies.



# italiano8

::actions:: [send message](#)

verified 

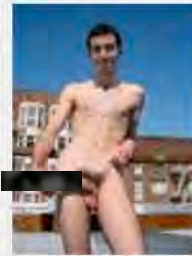
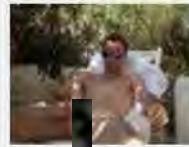
United States of America : California : Seascape

profile id: 1064124  
build: Defined  
height: 6' 0"  
weight: 155lb  
private password:

Show!

waist: 76cm (30")  
chest: 81cm (32")  
biceps: 36cm (14")  
body hair: Some Hair  
facial hair: Clean-Shaven  
cock size: Large  
his cock is: Cut

tattoos: None  
preferred role: Versatile  
interests: Underwear, Muscle worship, Web cam, Role play, Sportswear, Groups  
practice safer sex: When appropriate  
last here: 18 Mar 2021



I am currently trying to find a place to rent in LA area. I am an IHSS worker and will be trying to make amateur/onlyfans/justforfans porn while in LA so if you can help me out with finding a place to rent please message me.

Like many Californians right now, I have lost my home to a fire and am currently homeless. Several family members also lost their homes, so we are sharing hotels. I'm not going to be able to post much for a while until life settles back into whatever my new normal is going to be. Thanks for the likes and the fun Dudesnude guys. Hopefully I will see you on the other side.

**“I am currently trying to find a place to rent in LA area. I am an IHSS worker and will be trying to make amateur / onlyfans / justforfans porn while in LA so if you can help me out with finding a place to rent please message me. Like many Californians right now, I have lost my home to a fire and am currently homeless. Several family members also lost their homes, so we are sharing hotels.”**



Gordon Brent BROCHU-INGRAM, KEXMIN field station \* March 19, 2021  
Queer Space/Queering Space, College of Architecture, Art, and Planning, Cornell University  
**Reimagining Queer Infrastructure:**  
Planning for ecologies of care (in a decolonizing world during multiple emergencies)

# 5

## Queer life support as decolonial & reparative processes



Gordon Brent BROCHU-INGRAM, KEXMIN field station \* March 19, 2021

Queer Space/Queering Space, College of Architecture, Art, and Planning, Cornell University

Reimagining Queer Infrastructure:

Planning for ecologies of care (in a decolonizing world during multiple emergencies)

Decolonial and reparative initiatives (and liberation movements) have been working, and often successful, for over a century. But repair has often been slow for both the most under-served and vulnerable of LGBTQ2S populations and for minority erotic communities more generally. How can planning for queer infrastructure be part of more squarely challenging chronic violence and inequities?



Gordon Brent BROCHU-INGRAM, KEXMIN field station \* March 19, 2021  
Queer Space/Queering Space, College of Architecture, Art, and Planning, Cornell University  
Reimagining Queer Infrastructure:  
Planning for ecologies of care (in a decolonizing world during multiple emergencies)

NWT METIS NATION	
LAND CLAIM ENROLMENT APPLICATION	
PART 1: PERSONAL INFORMATION OF APPLICANT	
	Maiden Name / Surname at Birth
	Middle Name(s)
	Place of Birth
Male <input type="checkbox"/>	Commonly Used Nickname
	Postal Code (required)
	Phone (recommended)



Gordon Brent BROCHU-INGRAM, KEXMIN field station \* March 19, 2021

Queer Space/Queering Space, College of Architecture, Art, and Planning, Cornell University

**Reimagining Queer Infrastructure:**

Planning for ecologies of care (in a decolonizing world during multiple emergencies)

**6**

**Data sets for identifying  
emerging needs & desires  
for new queer  
infrastructure**



Gordon Brent BROCHU-INGRAM, KEXMIN field station \* March 19, 2021  
Queer Space/Queering Space, College of Architecture, Art, and Planning, Cornell University  
Reimagining Queer Infrastructure:  
Planning for ecologies of care (in a decolonizing world during multiple emergencies)

Home Shop Programs Conference Events Action Press About Blog Research ▾

JOIN US

# Data for Black Lives

Data as protest. Data as accountability. Data as collective action.

Sign up for our mailing list below or [Donate Now](#)

1+ First Name

GORDON BROCHU-INGRAM

Powered by Typeform



Gordon Brent BROCHU-INGRAM, KEXMIN field station \* March 19, 2021  
Queer Space/Queering Space, College of Architecture, Art, and Planning, Cornell University  
Reimagining Queer Infrastructure:  
Planning for ecologies of care (in a decolonizing world during multiple emergencies)

Bartlebooth



# Atlas menor #01. Disidencia sexual

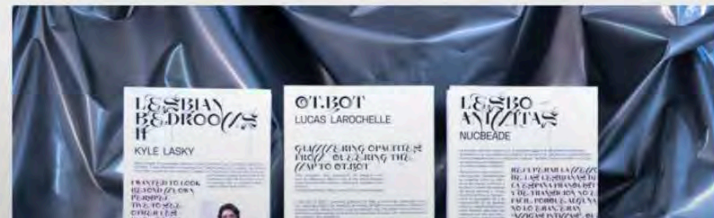
Eds. Venidadevenida

12,00€ + envío →

Comprar



Mirar a la cartografía desde las disidencias sexuales posibilita un proceso de resignificación que habla en otros términos, trata otros



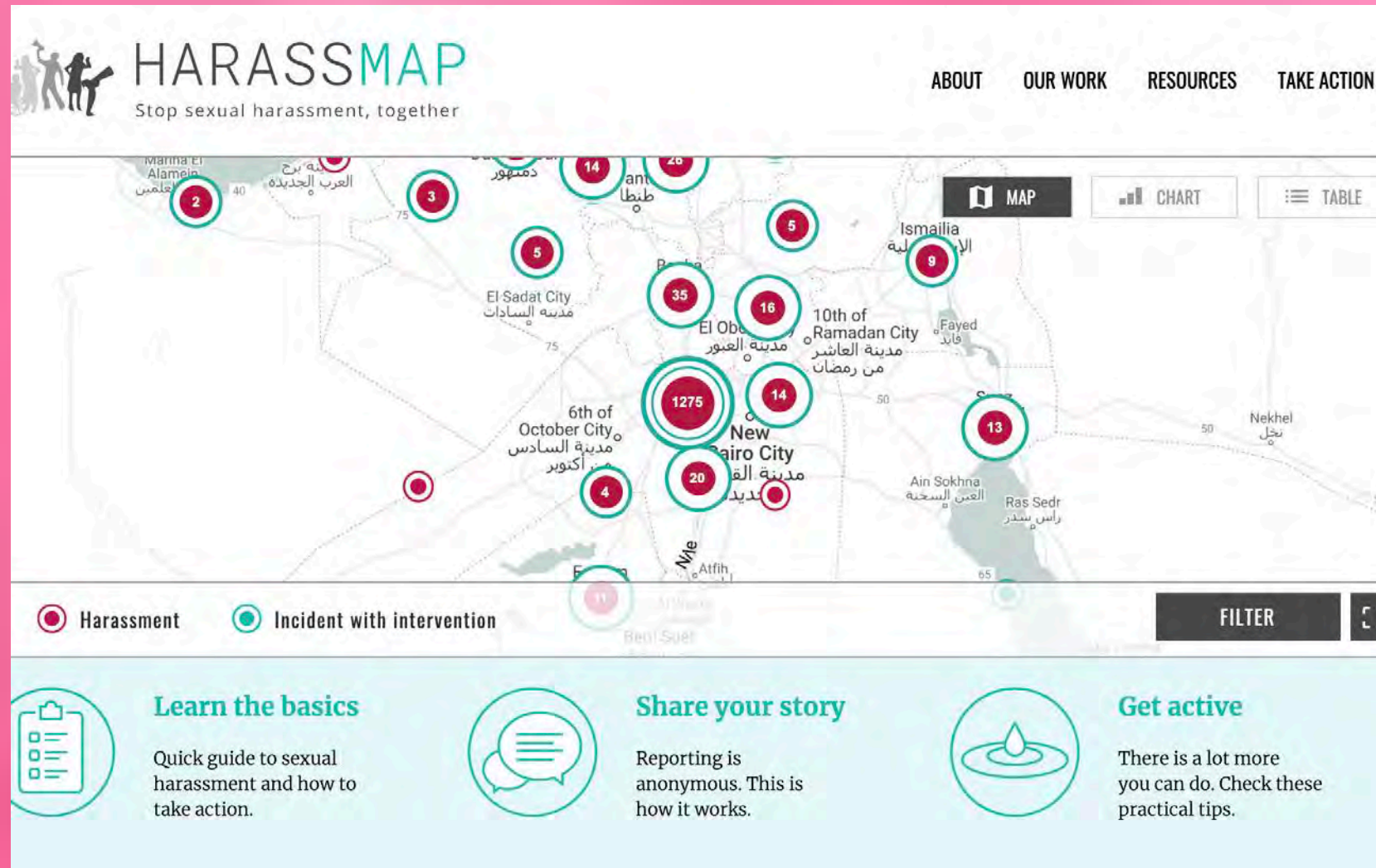


Gordon Brent BROCHU-INGRAM, KEXMIN field station \* March 19, 2021  
Queer Space/Queering Space, College of Architecture, Art, and Planning, Cornell University  
Reimagining Queer Infrastructure:  
Planning for ecologies of care (in a decolonizing world during multiple emergencies)

A screenshot of the Anti-Eviction Mapping Project website. The header features the project's logo and name, along with navigation links: 'About', 'Take Action', 'Resources / Recusos', and 'Reports / Writing'. The main content area has a dark background with the title 'Lost and Endangered Art/Community Spaces, Bay Area' in white. Below the title, a white text box contains the instruction: 'If you notice a lost or endangered art or community space, please fill out our survey here to add directly to the map.' A note below this states: 'Note: It might take up to an hour to have your entry populate our map.' The bottom half of the image shows a blurred view of the survey form, with a visible dropdown menu labeled 'name\_of\_art\_space' and the option 'NONE SELECTED'.



Gordon Brent BROCHU-INGRAM, KEXMIN field station \* March 19, 2021  
Queer Space/Queering Space, College of Architecture, Art, and Planning, Cornell University  
Reimagining Queer Infrastructure:  
Planning for ecologies of care (in a decolonizing world during multiple emergencies)





Gordon Brent BROCHU-INGRAM, KEXMIN field station \* March 19, 2021  
Queer Space/Queering Space, College of Architecture, Art, and Planning, Cornell University  
**Reimagining Queer Infrastructure:**  
Planning for ecologies of care (in a decolonizing world during multiple emergencies)

7

# Re-imagining for planners: Contemporary culture



Gordon Brent BROCHU-INGRAM, KEXMIN field station \* March 19, 2021

Queer Space/Queering Space, College of Architecture, Art, and Planning, Cornell University

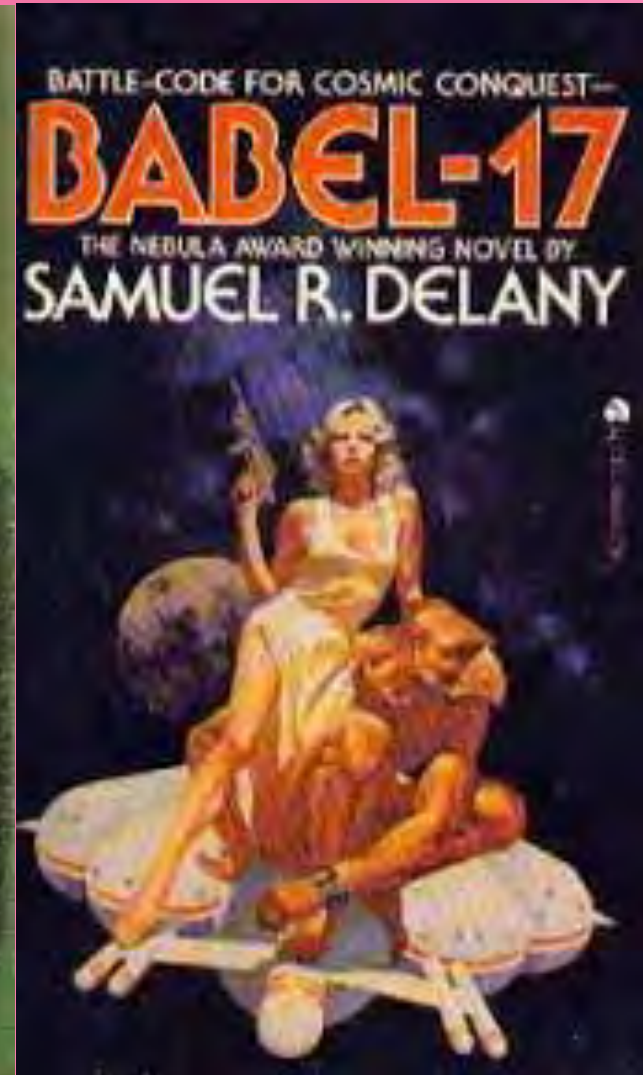
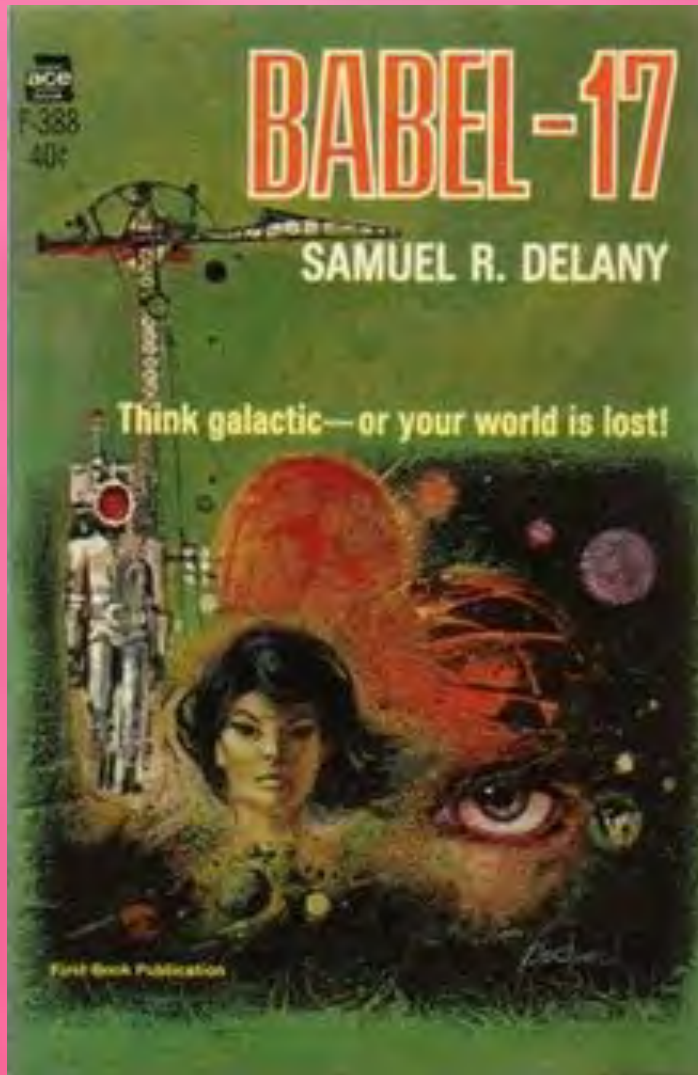
Reimagining Queer Infrastructure:

Planning for ecologies of care (in a decolonizing world during multiple emergencies)

In the kinds of pressurized contexts where expanded queer infrastructure is desperately needed, fantasy and other forms of cultural express can function to make conceptual and experiential 'space' to find, defend, transform physical space, fiscal resources, and organizational frameworks.



Gordon Brent BROCHU-INGRAM, KEXMIN field station \* March 19, 2021  
Queer Space/Queering Space, College of Architecture, Art, and Planning, Cornell University  
Reimagining Queer Infrastructure:  
Planning for ecologies of care (in a decolonizing world during multiple emergencies)





Gordon Brent BROCHU-INGRAM, KEXMIN field station \* March 19, 2021  
Queer Space/Queering Space, College of Architecture, Art, and Planning, Cornell University  
**Reimagining Queer Infrastructure:**  
Planning for ecologies of care (in a decolonizing world during multiple emergencies)

8

# Imagining queer infrastructure as "Regenerative Interactive Zones of Nurturing"



Gordon Brent BROCHU-INGRAM, KEXMIN field station \* March 19, 2021  
Queer Space/Queering Space, College of Architecture, Art, and Planning, Cornell University  
Reimagining Queer Infrastructure:  
Planning for ecologies of care (in a decolonizing world during multiple emergencies)



Guggenheim at Large

# H.O.R.I.Z.O.N. (Habitat One: Regenerative Interactive Zone of Nurture) by the Institute of Queer Ecology

Inspired by the ethos of utopian communities such as Lavender Hill, a queer commune established in Ithaca, New York, in 1973, H.O.R.I.Z.O.N. or Habitat One: Regenerative Interactive Zone of Nurture, is a downloadable, participatory artwork taking the form of a social simulation game. The



Gordon Brent BROCHU-INGRAM, KEXMIN field station \* March 19, 2021  
Queer Space/Queering Space, College of Architecture, Art, and Planning, Cornell University  
**Reimagining Queer Infrastructure:**  
Planning for ecologies of care (in a decolonizing world during multiple emergencies)

9

# Planning consultation as communal reimagining



Gordon Brent BROCHU-INGRAM, KEXMIN field station \* March 19, 2021

Queer Space/Queering Space, College of Architecture, Art, and Planning, Cornell University

Reimagining Queer Infrastructure:

Planning for ecologies of care (in a decolonizing world during multiple emergencies)

Communal imagining exercises, as planning workshops, are increasingly necessary and involve more creative and community-based events and ongoing relationships. These exchanges will be well-documented, on-line, but post-COVID, there are increasing pressures for more physical contact.



Gordon Brent BROCHU-INGRAM, KEXMIN field station \* March 19, 2021  
Queer Space/Queering Space, College of Architecture, Art, and Planning, Cornell University  
Reimagining Queer Infrastructure:  
Planning for ecologies of care (in a decolonizing world during multiple emergencies)





Gordon Brent BROCHU-INGRAM, KEXMIN field station \* March 19, 2021

Queer Space/Queering Space, College of Architecture, Art, and Planning, Cornell University

**Reimagining Queer Infrastructure:**

Planning for ecologies of care (in a decolonizing world during multiple emergencies)

**10**

**Advocating for new queer  
infrastructure:**

**Some goals & practices**



Gordon Brent BROCHU-INGRAM, KEXMIN field station \* March 19, 2021

Queer Space/Queering Space, College of Architecture, Art, and Planning, Cornell University

Reimagining Queer Infrastructure:

Planning for ecologies of care (in a decolonizing world during multiple emergencies)

We can envision new queer infrastructure as mutual aid. "Mutual aid projects are a form of political participation in which people take responsibility for caring for one another and changing political conditions, not just through symbolic acts or putting pressure on their representatives in government, but by actually building new social relations that are more survivable." Big Door Brigade



Gordon Brent BROCHU-INGRAM, KEXMIN field station \* March 19, 2021  
Queer Space/Queering Space, College of Architecture, Art, and Planning, Cornell University  
**Reimagining Queer Infrastructure:**  
Planning for ecologies of care (in a decolonizing world during multiple emergencies)

11

**Conclusions:**

**Infrastructures of queer  
repair & imagination**



Gordon Brent BROCHU-INGRAM, KEXMIN field station \* March 19, 2021

Queer Space/Queering Space, College of Architecture, Art, and Planning, Cornell University

Reimagining Queer Infrastructure:

Planning for ecologies of care (in a decolonizing world during multiple emergencies)

If we are going to protect the queer communities that have nurtured us while providing more space and services to the most vulnerable and under-served LGBTQ2S communities, we will need to listen more carefully to each other, find deeper inspiration and compassion through



Gordon Brent BROCHU-INGRAM, KEXMIN field station \* March 19, 2021

Queer Space/Queering Space, College of Architecture, Art, and Planning, Cornell University

Reimagining Queer Infrastructure:

Planning for ecologies of care (in a decolonizing world during multiple emergencies)

the exchange of experiences embodied in contemporary culture, use a wider array of data sets more precisely and creatively, and find new ways to celebrate life together (and in ways that won't make us sick)...which means that we have a lot of creative and collective work ahead of us in the coming months and years.



Gordon Brent BROCHU-INGRAM, KEXMIN field station \* March 19, 2021

Queer Space/Queering Space, College of Architecture, Art, and Planning, Cornell University

Reimagining Queer Infrastructure:

Planning for ecologies of care (in a decolonizing world during multiple emergencies)

A copy of the paper written for this presentation will be available upon request in early April.

[studio@gordonbrentingram.ca](mailto:studio@gordonbrentingram.ca)

Facebook:

Gordon Brent BROCHU-INGRAM

A photograph of a green, textured sign with yellow, slightly blurred text that reads "Think galactic—or your world is lost!". The sign is set against a dark background, possibly a wall or a large tree trunk.